

Eastern WB400

400 Man / 8 Point / 300MT+25MT Crane / Accommodation/Work Barge



Eastern WB400

400 Berths in en-suite cabins
8 Point Mooring System
Built 2016
300MT, Man Riding Main Crane
25MT, Man Riding Auxiliary Crane
1,950 m ² Open Deck Space
1,100 m ² Covered Deck Space
Helideck
Built to SPS, MODU Certified
Fitted with Cinema, Offices, Recreation etc

For further information, please contact us:
Email: marketing@easternnavigation.com
Telephone: +65 6268 3222

Eastern WB400

400 Man / 8 Point / 300MT+25MT Crane / Accommodation/Work Barge

Summary

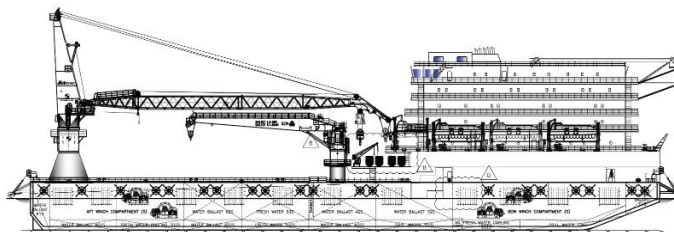
The Eastern WB400 is a 400 Man Accommodation and Work Barge built for the Offshore Oil and Gas industry, and joins our fleet of highly capable Offshore Accommodation/Light Construction Vessels in 2016.

She has the following key features:

- 300 MT Offshore, Man-Riding Crane located on her port side stern, and a second 25MT auxiliary crane for sim-ops including man-riding
- Largest and deepest hull in her class at 9 meters, with up to 6 meters operating draft, for greater stability, safety and comfort while offshore, and less chance of green deck
- Accommodation for 400 passengers in comfortable, air-conditioned 1, 2 and 4 man cabins
- Largest in class covered and uncovered clear deck space for flexible operations

She is capable of the following duties:

- Offshore Accommodation for maintenance, HUC and shutdown campaigns, even in monsoon conditions
- Offshore construction and diving platform
- Capable of modification to support Hydraulic Workover, Wireline and Well Intervention operations



Eastern WB400 400 Man / 8 Point / 300MT+25MT Crane / Accommodation/Work Barge

Principal Particulars

Flag	Singapore
Built	2016
Length Overall	120.00m
Beam Overall	35.00 m
Depth Moulded	9.00 m
Design Draft	6.00 m
Deadweight	12,700 MT
Helideck	Suitable for Sikorsky S92N & S61 Helicopters, compliant with CAP437

Classification

ABS +A1, ACCOMODATION BARGE, HELIDK, UWILD, MLC-ACCOM(SPS), CRC, BWT, SPS, CIRCLE M, GP

Capacities

Fuel Oil	2,361 m3
Potable Water	6,109 m3
Mud	717 m3
WB/DW	7404 m3 / 3,167 m3
Lube/Hydraulic	11.1 m3 / 11.2 m3
Sewage	165 m3
Bilge	94 m3
Open Deck	1,950 m2 Wood Sheathed: 1,720 m2
Covered Deck	1,100 m2
Total Deck Area	3,050 m2
Deck Cargo	Approx. 3000 MT
Cargo Deck Load	15 tons/m2

Discharging Rates

Fresh Water	1 x 150 m3/hr @ 80 m head
FO Cargo transfer	1 x 150 m3/hr @ 90 m head
FO transfer	1 x 45 m3/hr @ 45 m head
Drill Water	1 x 150 m3/hr @ 80 m head
Ballast Water	2 x 500 m3/hr @ 50 m head
Liquid Mud	2 x 100 m3/hr @ 75 m head
Flow Meter	Fitted for Fuel and FW lines

Life Saving / Rescue Equipment / Pollution Control

Rescue Boat	1 x 6 Pax FRC
Life Raft & Davit	32 x 25 men, conforming to MODU convention
Life Boat	3 x 120 men + 1 x 40 men on each side
Firefighting For Helideck	244.84 m3/hr total capacity 1 x 160 m/hr @11bar
Foam fire-fighting system for helideck, sprinkler system, fixed CO2 system	

Machinery

Generators	5 x 750 kW diesel generators @ 440V, 3 Phase, 60Hz 1 x 335 kW emergency diesel generator
Air Compressors	2 x 1500m3/h @ 10bar

Lifting Equipment

Main Crane	1 x 300MT Huisman Crane Main Hoist: - 300MT @ 15 m, - 42.5MT @ 42.5 m Auxiliary Hoist: 60 MT @ 28 m 30MT @ 45m (single fall) Boom Length: 58.8 m API-2C, Built to ABS Rules, CRC, Man-Riding
Auxiliary Crane	1 x 25 MT @ 28 m, fixed boom, API-2C, Man-Riding

Spread Mooring Equipment

Mooring Winch	4 Sets Double Drum Winch 8 Mooring Drums Drum Pull (1 st Layer): - 130MT @ 13 m/min(low) - 28MT @ 40 m/min(high) Drum Capacity: - 1,500m x 64mm Brake Holding - 270MT (static) c/w Length and Tension meters, remote and local control
Tugger Winches	2 x 15MT @ 10m/min 22.5MT Brake Holding 250 m x 28 mm Drum Capacity
Capstans	4 x 10 MT @ 15 m/min
Anchors	8 + 2 Delta Flipper anchors, 12MT
Associated Equipment	Anchor Wire Fairleads, Sheaves, Anchor Racks
CCTV	All Winches and Deck, Personnel Landing Area

Eastern WB400

400 Man / 8 Point / 300MT+25MT Crane / Accommodation/Work Barge

Accommodation

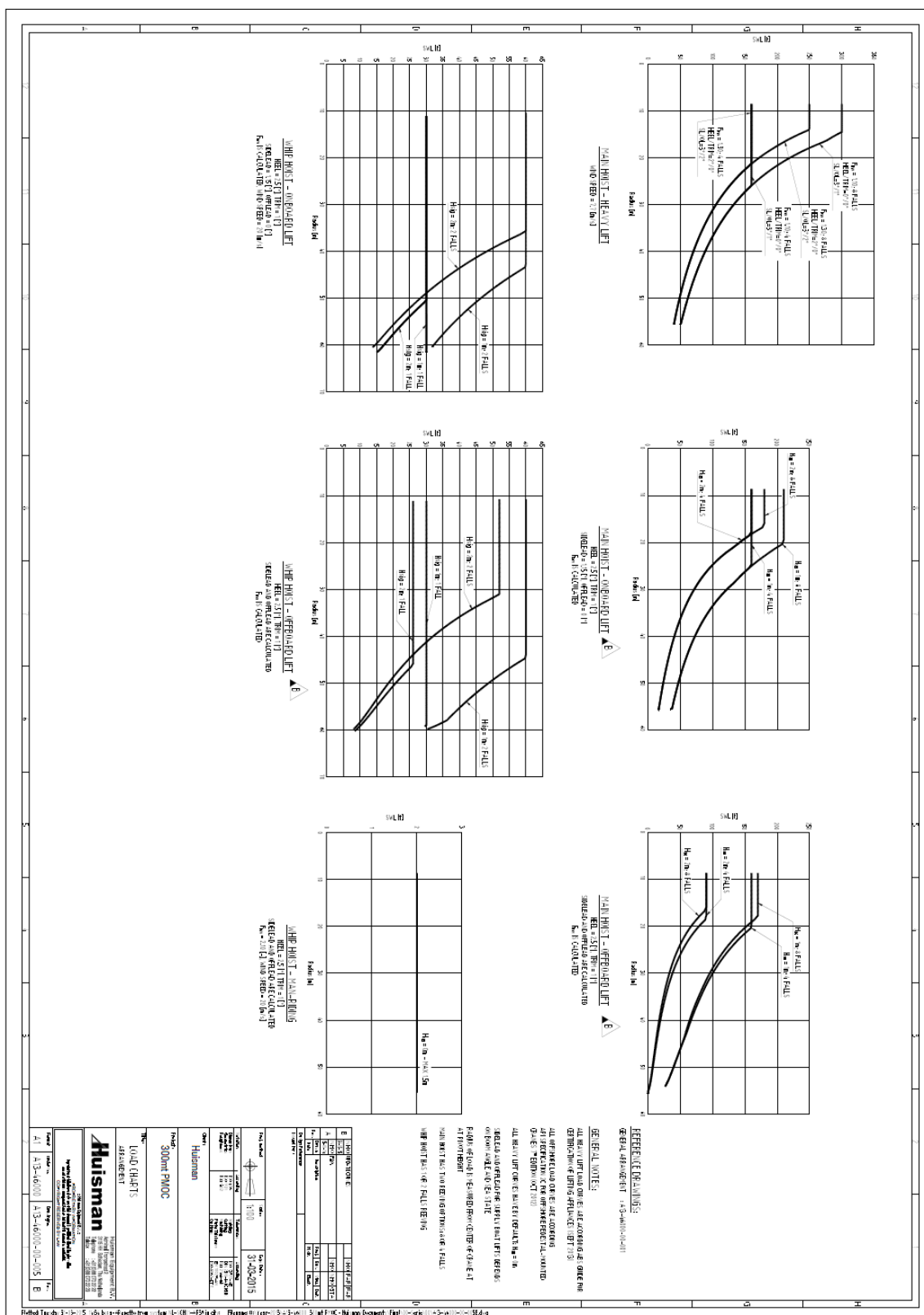
1-Berth Cabins	14, ensuite
2-Berth Cabins	67, ensuite
4-Berth Cabins	63, ensuite
Berths - Total	400
Hospital	3 Berth
Recreation/Movie Room	2 x Recreation Room 1 x Cinema
Office	12 of varying sizes
Conference Room	1 x 30 pax capacity
Gym	4 treadmills, 3 bicycles, weights and combination machine
Table Tennis Room	1 x Table Tennis Table
Waiting Room	1 x 30 pax helicopter waiting room
Galley	1 x Galley with adjoining Bakery
Chiller/Freezer	For 400 pax, 30 Days Endurance
Provisions	For 400 pax, 30 Days Endurance
Water Maker	3 x 60 T/day R.O. type

Additional Equipment

Sewage Treatment Plant	2 x 200 man capacity
Fuel Oil Purifier	2 x 2,600 litres/hr
Oily Water Separator	1 x 1 m3/hr, 15ppm IMO Type
Refrigeration System	Non-CFC R404a
Hot Water Calorifier	3 x 1,000 litres capacity
Incinerator	According to MARPOL requirements
Floodlights	34 x 2,000W Metal Halide
Searchlight	4 x 2,000W
Workshop	Deck Workshop fitted with Lathe, Drilling Machine, Grinding Machine, Welding Machine and Monorail
Forklift	1 x 7MT 1 x 1MT (Electric for Provisions)
MODU Code	Certified as a MODU

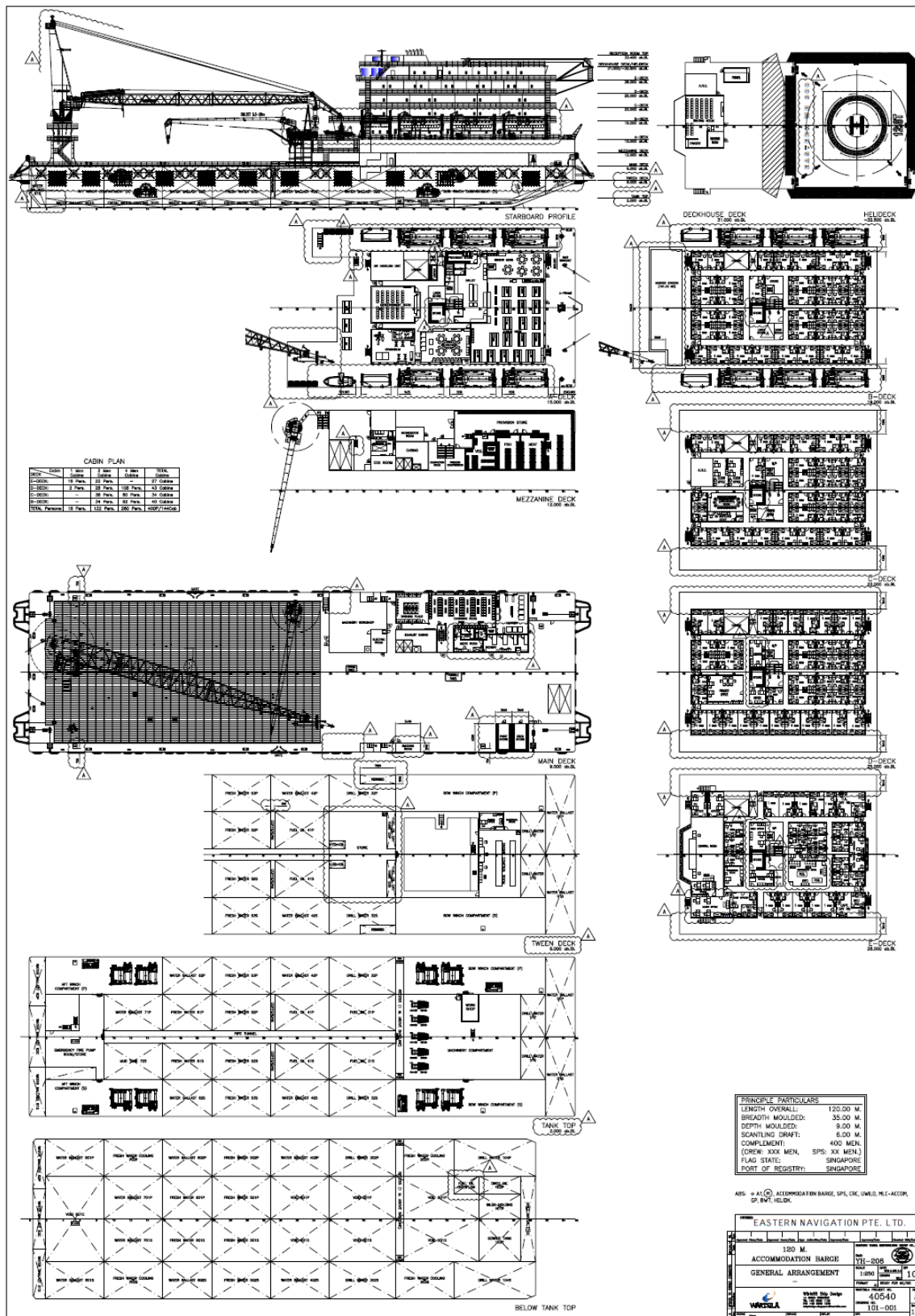
Navigation and Communication Equipment

X-Band Radar, Echo Sounder, GPS, Satellite Compass, GMDSS (Area 3), VHF Transceiver, SSB Radio, 2 x VHF Radio, 3 x GMDSS VHF Handheld Radio, 1 x EPIRB, 1 x NAVTEX, 2 x INMARSAT-C Terminal (with SSAS), 1 x Air-Band VHF, 1 x NDB, 3 x Portable VHF, 1 x Weather Fax, 1 x Anemometer, 1 x FBB Satellite Phone



Eastern WB400

400 Man / 8 Point / 300MT+25MT Crane / Accommodation/Work Barge



Eastern WB400

Published 10/11/2016 | Page 6